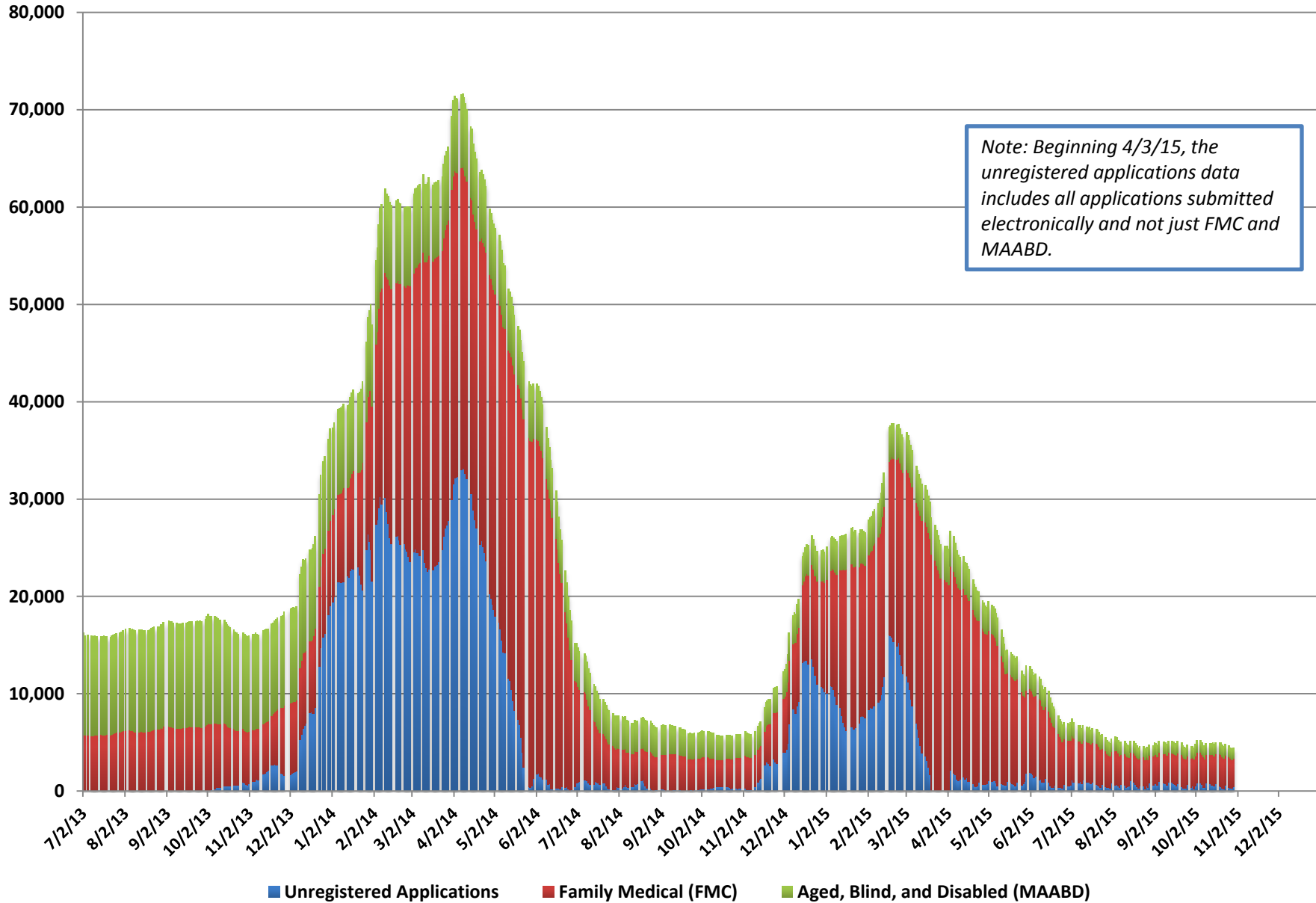


Medicaid Chart Pack

November 2015

Pending Applications

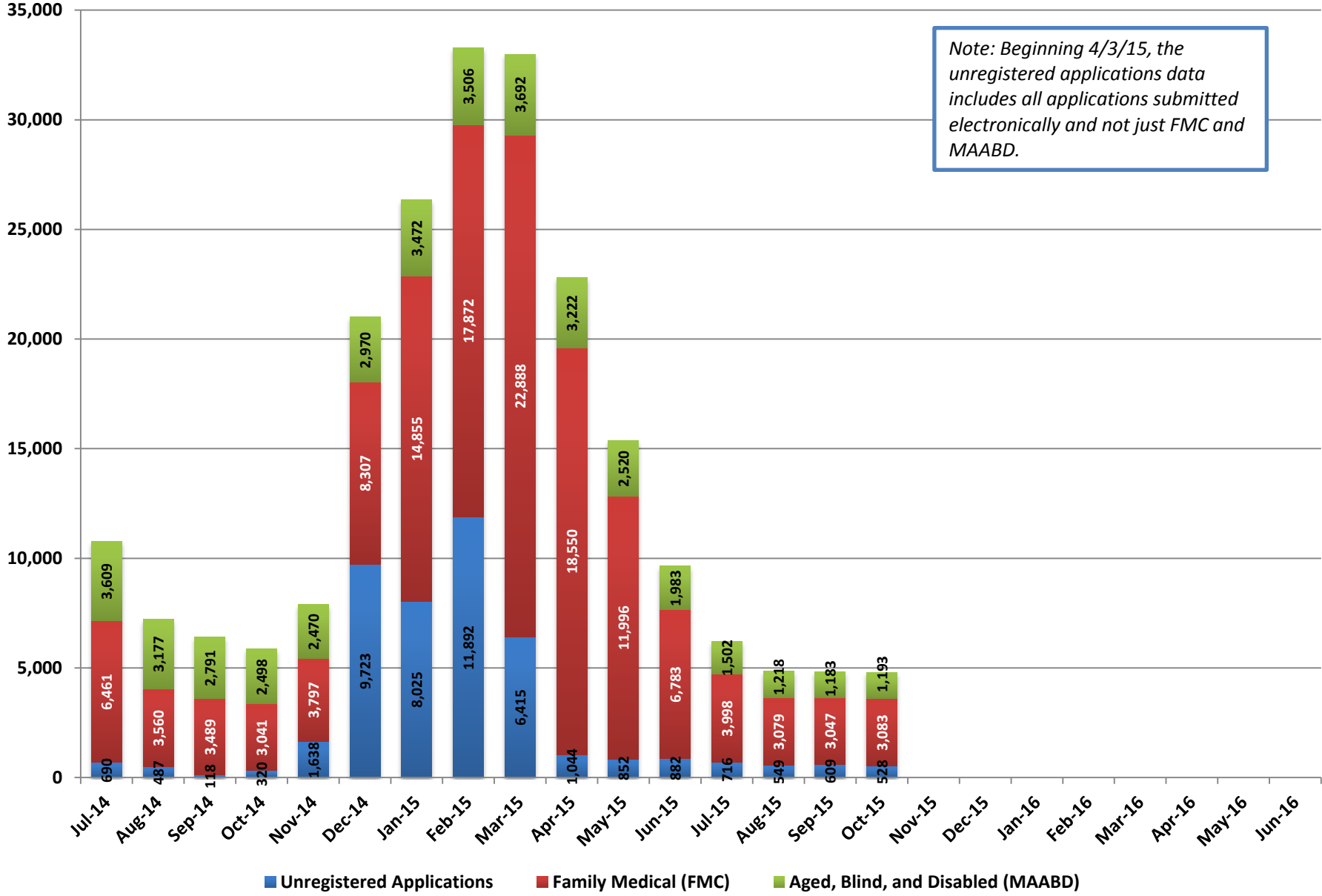


Pending Applications

Date	Unregistered Applications	Family Medical (FMC)			Aged, Blind, and Disabled (MAABD)				Total Medicaid Pending Applications
		Pending <= 45 Days	Pending > 45 Days	Total Applications	Pending <= 45 Days	Pending 46-90 Days	Pending > 90 Days	Total Applications	
10/1/15	512	3,018	23	3,041	948	137	198	1,283	4,836
10/2/15	852	3,083	24	3,107	922	140	197	1,259	5,218
10/5/15	788	3,132	27	3,159	877	148	194	1,219	5,166
10/6/15	687	3,052	23	3,075	878	143	191	1,212	4,974
10/7/15	357	3,106	26	3,132	870	134	188	1,192	4,681
10/8/15	347	2,951	22	2,973	842	129	186	1,157	4,477
10/9/15	829	2,893	21	2,914	859	134	182	1,175	4,918
10/12/15	724	2,975	26	3,001	848	141	186	1,175	4,900
10/13/15	627	3,053	32	3,085	867	148	183	1,198	4,910
10/14/15	656	3,064	26	3,090	889	139	182	1,210	4,956
10/15/15	527	3,048	23	3,071	909	133	175	1,217	4,815
10/16/15	713	3,054	23	3,077	887	139	179	1,205	4,995
10/19/15	540	3,204	43	3,247	882	155	183	1,220	5,007
10/20/15	466	3,224	38	3,262	882	151	184	1,217	4,945
10/21/15	276	3,241	27	3,268	890	140	185	1,215	4,759
10/22/15	233	3,132	26	3,158	866	134	185	1,185	4,576
10/23/15	598	3,050	21	3,071	856	141	185	1,182	4,851
10/26/15	384	3,088	19	3,107	836	136	182	1,154	4,645
10/27/15	264	3,049	22	3,071	819	131	173	1,123	4,458
10/28/15	277	2,928	22	2,950	835	127	174	1,136	4,363
10/29/15	431	2,868	22	2,890	818	119	176	1,113	4,434

Pending Applications (Monthly Average)

Note: Beginning 4/3/15, the unregistered applications data includes all applications submitted electronically and not just FMC and MAABD.



Pending Applications - Monthly Average

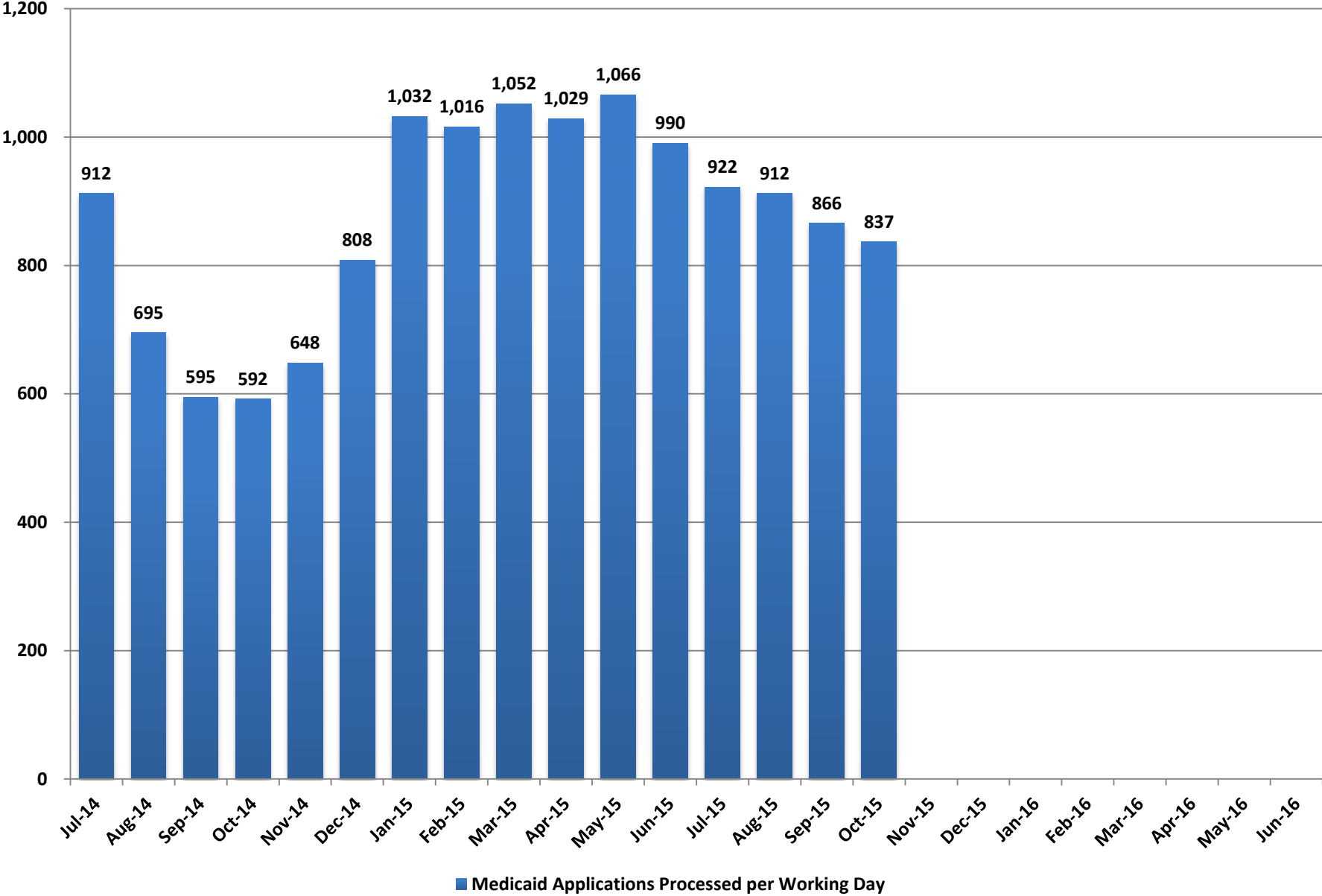
Month	Unregistered Applications	Family Medical (FMC)			Aged, Blind, and Disabled (MAABD)				Total Medicaid Pending Applications
		Pending <= 45 Days	Pending > 45 Days	Total Applications	Pending <= 45 Days	Pending 46-90 Days	Pending > 90 Days	Total Applications	
Jul-14	690	3,449	3,012	6,461	1,096	344	2,169	3,609	10,760
Aug-14	487	2,772	788	3,560	1,139	315	1,724	3,177	7,224
Sep-14	118	2,836	654	3,489	1,056	315	1,420	2,791	6,399
Oct-14	320	2,717	323	3,041	1,000	258	1,239	2,498	5,858
Nov-14	1,638	3,528	269	3,797	1,091	247	1,132	2,470	7,905
Dec-14	9,723	7,947	360	8,307	1,636	288	1,046	2,970	20,999
Jan-15	8,025	11,957	2,898	14,855	1,884	622	966	3,472	26,352
Feb-15	11,892	11,060	6,812	17,872	1,673	939	894	3,506	33,270
Mar-15	6,415	14,906	7,982	22,888	1,931	878	883	3,692	30,662
Apr-15	1,044	8,390	10,160	18,550	1,487	944	792	3,222	22,721
May-15	852	6,932	5,064	11,996	1,314	514	692	2,520	15,369
Jun-15	882	5,175	1,608	6,783	1,119	313	551	1,983	9,648
Jul-15	716	3,692	307	3,998	1,013	214	275	1,502	6,216
Aug-15	549	3,021	58	3,079	865	153	199	1,218	4,846
Sep-15	609	3,021	25	3,047	866	140	176	1,183	4,838
Oct-15	528	3,058	26	3,083	870	138	184	1,193	4,804
Nov-15									
Dec-15									
Jan-16									
Feb-16									
Mar-16									
Apr-16									
May-16									
Jun-16									

Note: Beginning 4/3/15, the unregistered applications data includes all applications submitted electronically and not just FMC and MAABD.

Fiscal Year Averages

Fiscal Year	Unregistered Applications	Family Medical (FMC)			Aged, Blind, and Disabled (MAABD)				Total Medicaid Pending Applications
		Pending <= 45 Days	Pending > 45 Days	Total Applications	Pending <= 45 Days	Pending 46-90 Days	Pending > 90 Days	Total Applications	
FY14	13,681	7,925	8,462	16,387	2,094	1,197	5,355	8,646	35,324
FY15	3,376	6,810	3,357	10,167	1,369	498	1,129	2,997	16,405
FY16 to date	601	3,198	104	3,302	904	161	209	1,274	5,176

Medicaid Applications Processed per Working Day

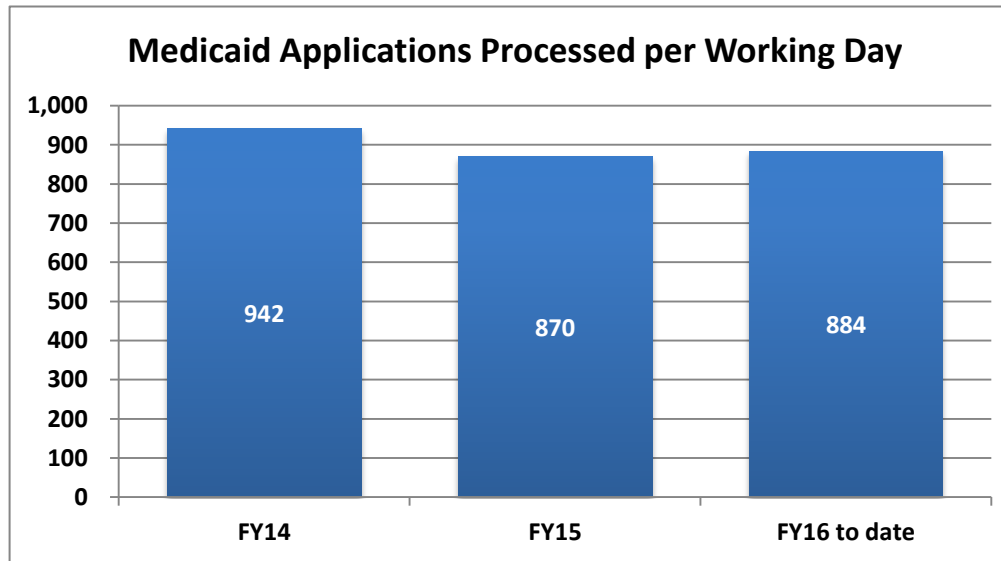


Medicaid Applications Processed Per Working Day

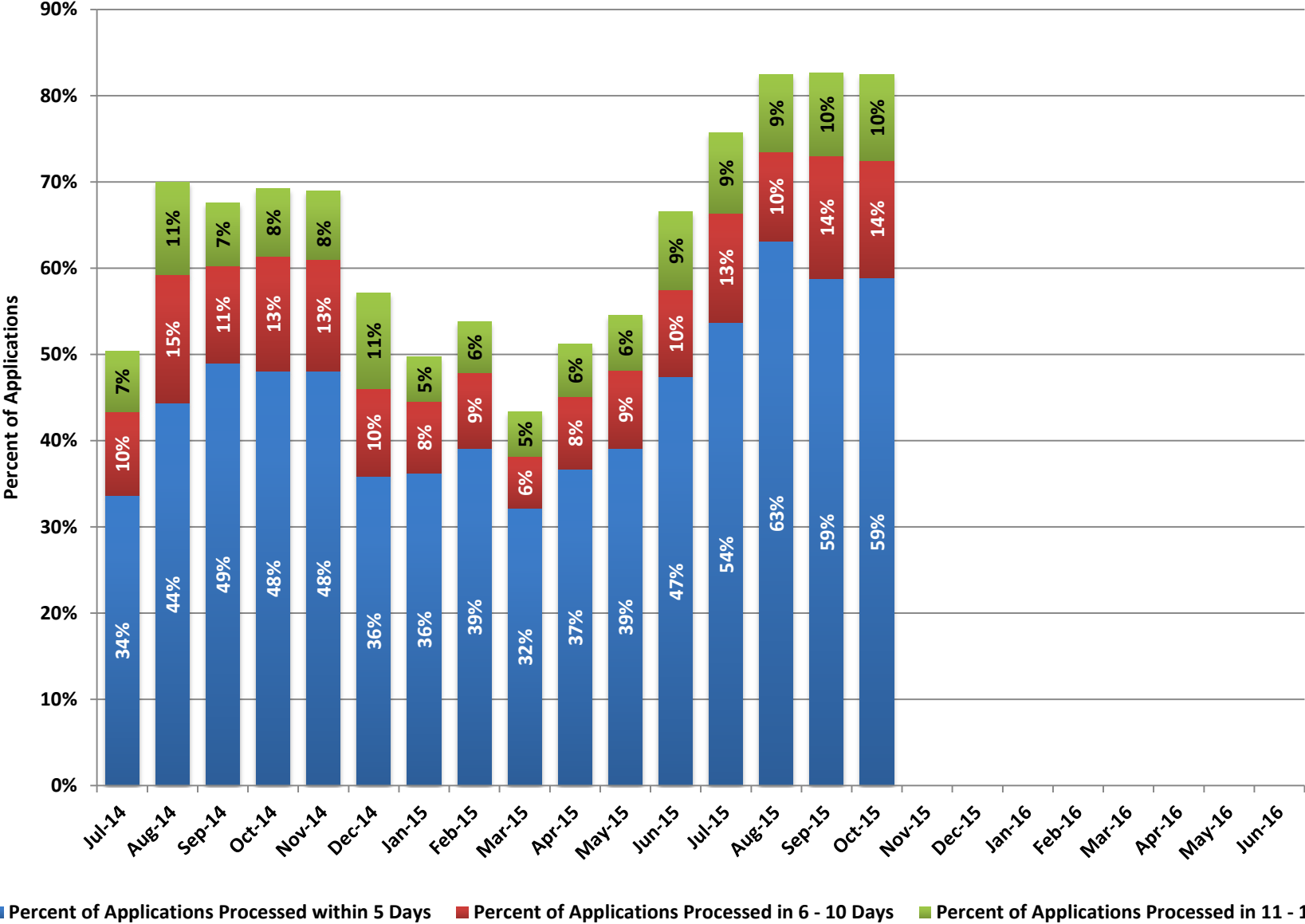
Month	Medicaid Applications Processed per Working Day
Jul-14	912
Aug-14	695
Sep-14	595
Oct-14	592
Nov-14	648
Dec-14	808
Jan-15	1,032
Feb-15	1,016
Mar-15	1,052
Apr-15	1,029
May-15	1,066
Jun-15	990
Jul-15	922
Aug-15	912
Sep-15	866
Oct-15	837
Nov-15	
Dec-15	
Jan-16	
Feb-16	
Mar-16	
Apr-16	
May-16	
Jun-16	

Fiscal Year Averages

Fiscal Year	Medicaid Applications Processed per Working Day
FY14	942
FY15	870
FY16 to date	884



Applications Processed within 15 Days



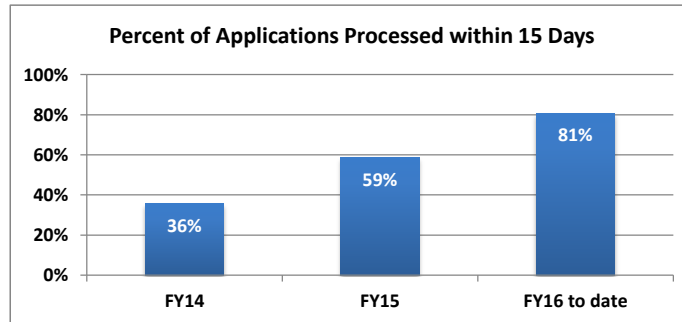
Applications Processed within 15 Days

Month	Applications Processed within 5 Days	Percent of Applications Processed within 5 Days	Applications Processed in 6 - 10 Days	Percent of Applications Processed in 6 - 10 Days	Applications Processed in 11 - 15 Days	Percent of Applications Processed in 11 - 15 Days	Applications Processed within 15 Days	Total Applications Processed	Percent of Applications Processed within 15 Days
Jul-14	6,748	34%	1,958	10%	1,404	7%	10,110	20,070	50%
Aug-14	6,471	44%	2,172	15%	1,570	11%	10,213	14,590	70%
Sep-14	6,130	49%	1,404	11%	918	7%	8,452	12,507	68%
Oct-14	6,252	48%	1,740	13%	1,016	8%	9,008	13,019	69%
Nov-14	5,296	48%	1,423	13%	878	8%	7,597	11,015	69%
Dec-14	6,372	36%	1,821	10%	1,964	11%	10,157	17,785	57%
Jan-15	7,486	36%	1,702	8%	1,068	5%	10,256	20,642	50%
Feb-15	7,514	39%	1,685	9%	1,126	6%	10,325	19,202	54%
Mar-15	7,510	32%	1,402	6%	1,225	5%	10,137	23,366	43%
Apr-15	8,415	37%	1,922	8%	1,401	6%	11,738	22,922	51%
May-15	8,339	39%	1,927	9%	1,357	6%	11,623	21,311	55%
Jun-15	10,318	47%	2,209	10%	1,959	9%	14,486	21,780	67%
Jul-15	10,895	54%	2,579	13%	1,878	9%	15,352	20,289	76%
Aug-15	12,090	63%	1,978	10%	1,716	9%	15,784	19,146	82%
Sep-15	10,683	59%	2,577	14%	1,761	10%	15,021	18,171	83%
Oct-15	10,342	59%	2,395	14%	1,753	10%	14,490	17,569	82%
Nov-15									
Dec-15									
Jan-16									
Feb-16									
Mar-16									
Apr-16									
May-16									
Jun-16									

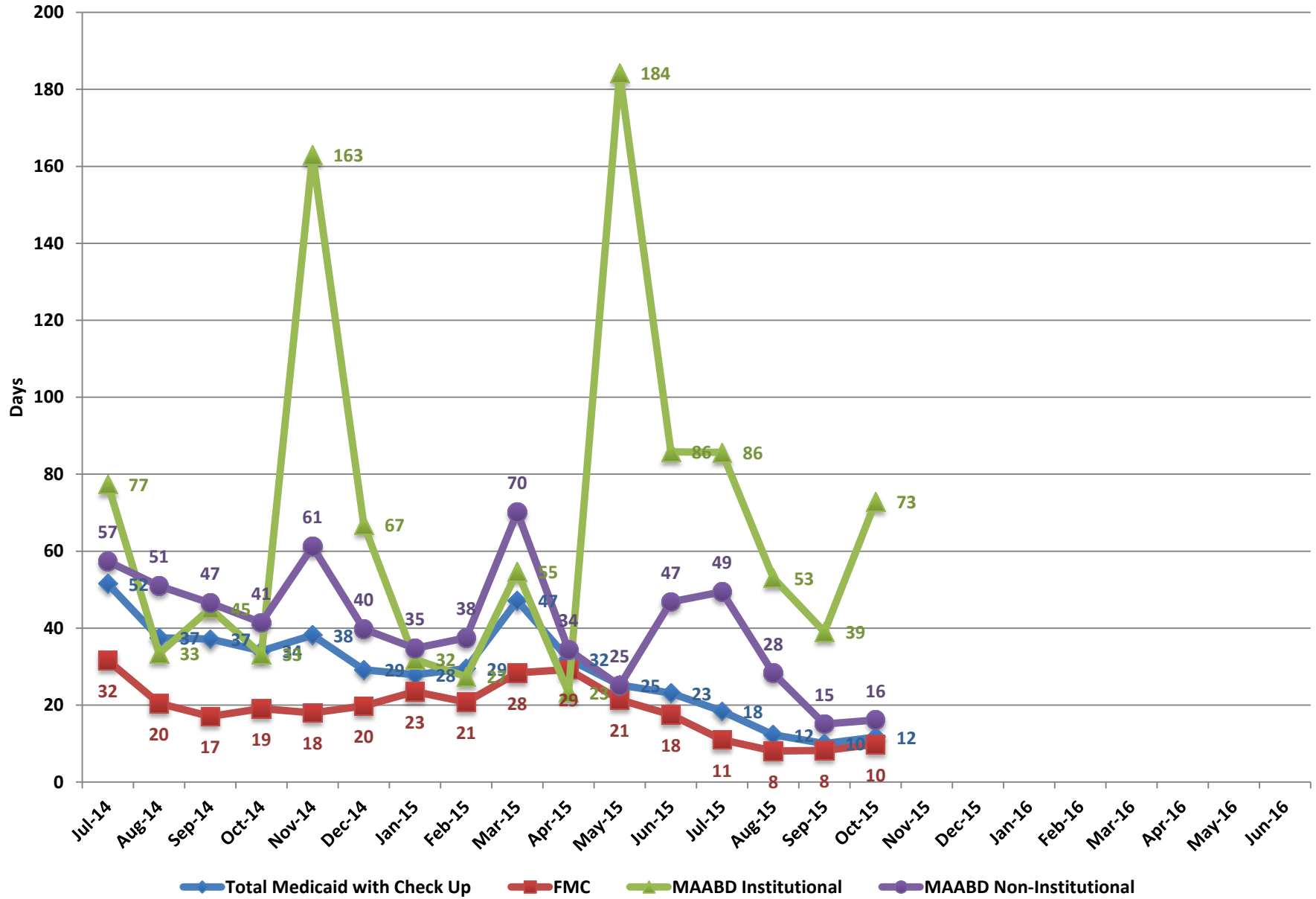
Note: This data reflects Family Medical (FMC), Newly Eligible Adults, Aged, Blind and Disabled (MAABD), and Nevada Check Up applications.

Percent of Applications Processed within 15 Days - Fiscal Year Average

Fiscal Year	% within 15 Days
FY14	36%
FY15	59%
FY16 to date	81%



Average Processing Time (Days)

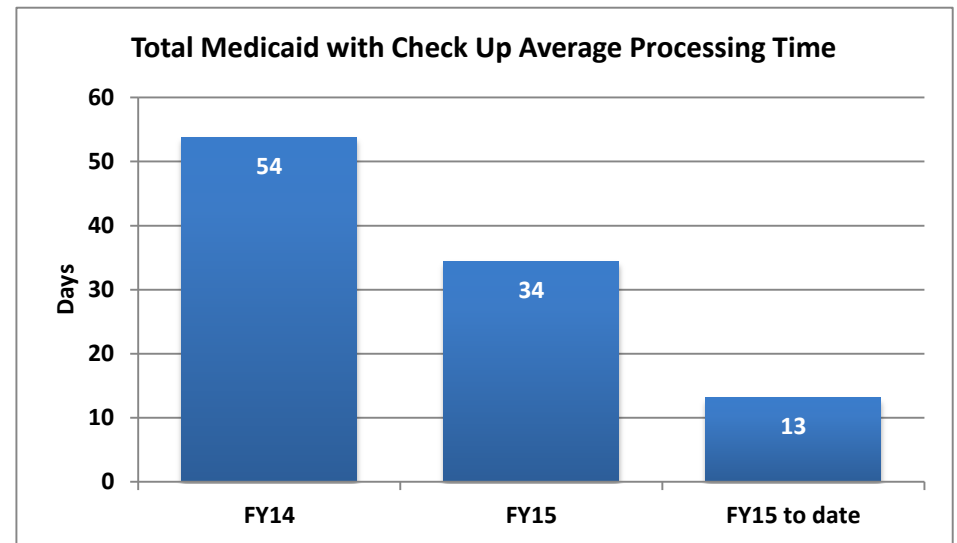


Average Processing Time (Days)

Month	Total Medicaid with Check Up	FMC	MAABD Institutional	MAABD Non-Institutional
Jul-14	52	32	77	57
Aug-14	37	20	33	51
Sep-14	37	17	45	47
Oct-14	34	19	33	41
Nov-14	38	18	163	61
Dec-14	29	20	67	40
Jan-15	28	23	32	35
Feb-15	29	21	27	38
Mar-15	47	28	55	70
Apr-15	32	29	23	34
May-15	25	21	184	25
Jun-15	23	18	86	47
Jul-15	18	11	86	49
Aug-15	12	8	53	28
Sep-15	10	8	39	15
Oct-15	12	10	73	16
Nov-15				
Dec-15				
Jan-16				
Feb-16				
Mar-16				
Apr-16				
May-16				
Jun-16				

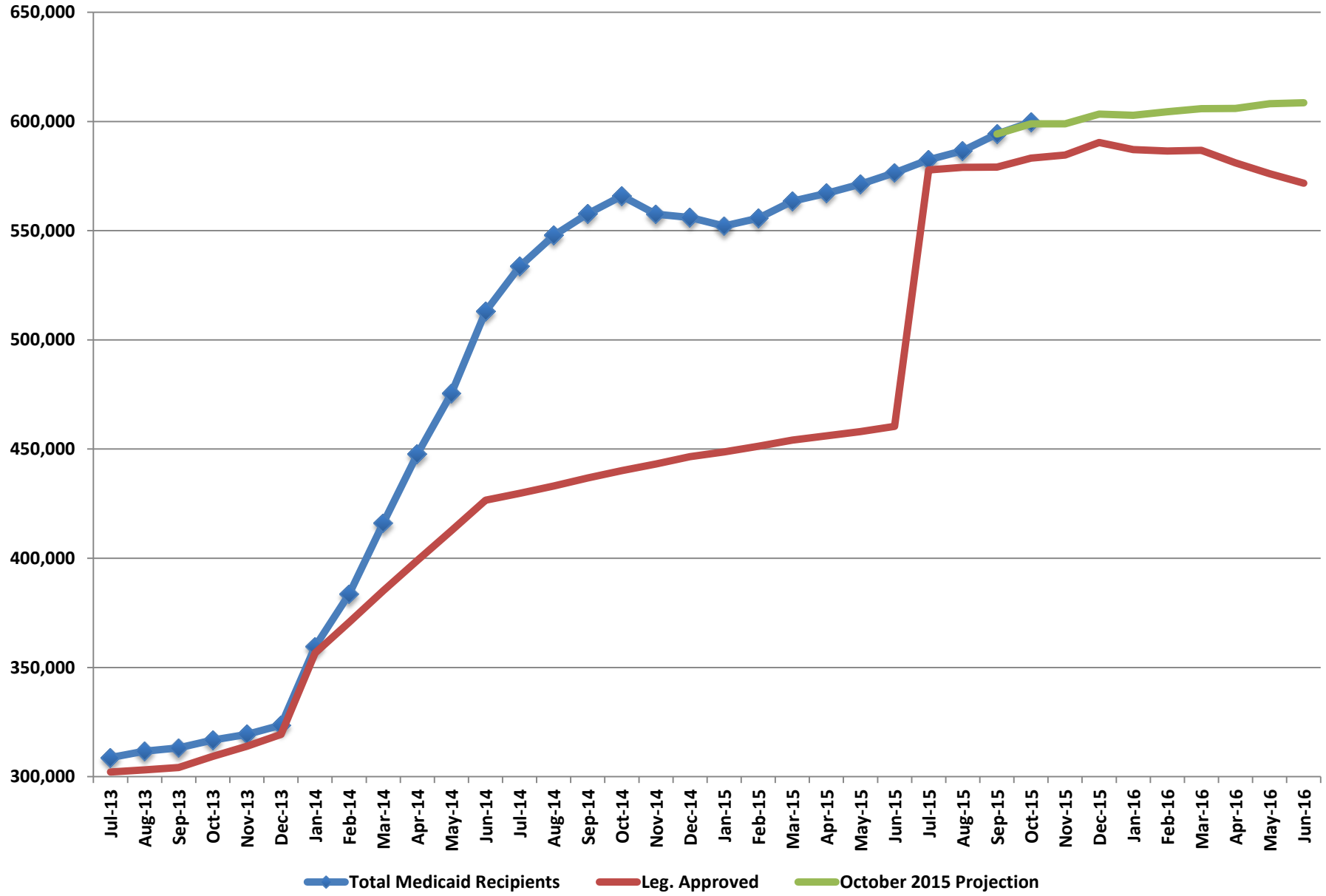
Fiscal Year Averages

Fiscal Year	Total Medicaid with Check Up	FMC	MAABD Institutional	MAABD Non-Institutional
FY14	54			
FY15	34	22	69	45
FY15 to date	13	9	63	27



Note: A few aid codes with average processing days in excess of 100 days drove up the MAABD Institutional average processing time in November 2014 and May 2015.

Total Medicaid Recipients

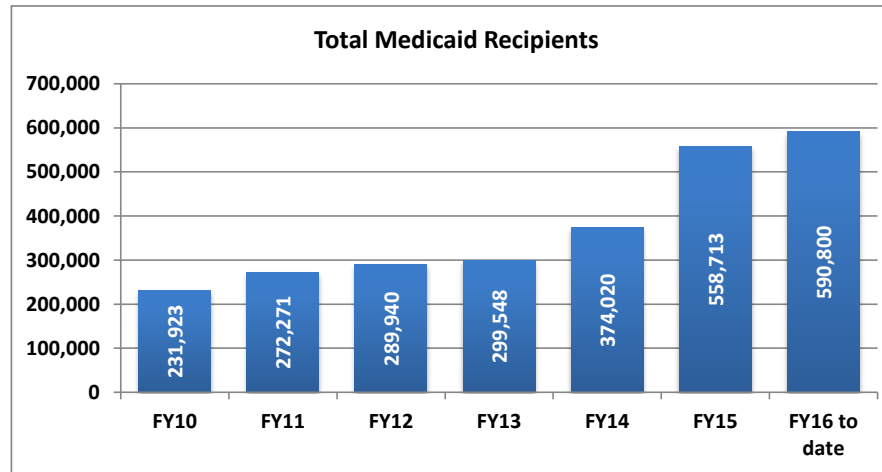


Total Medicaid Recipients

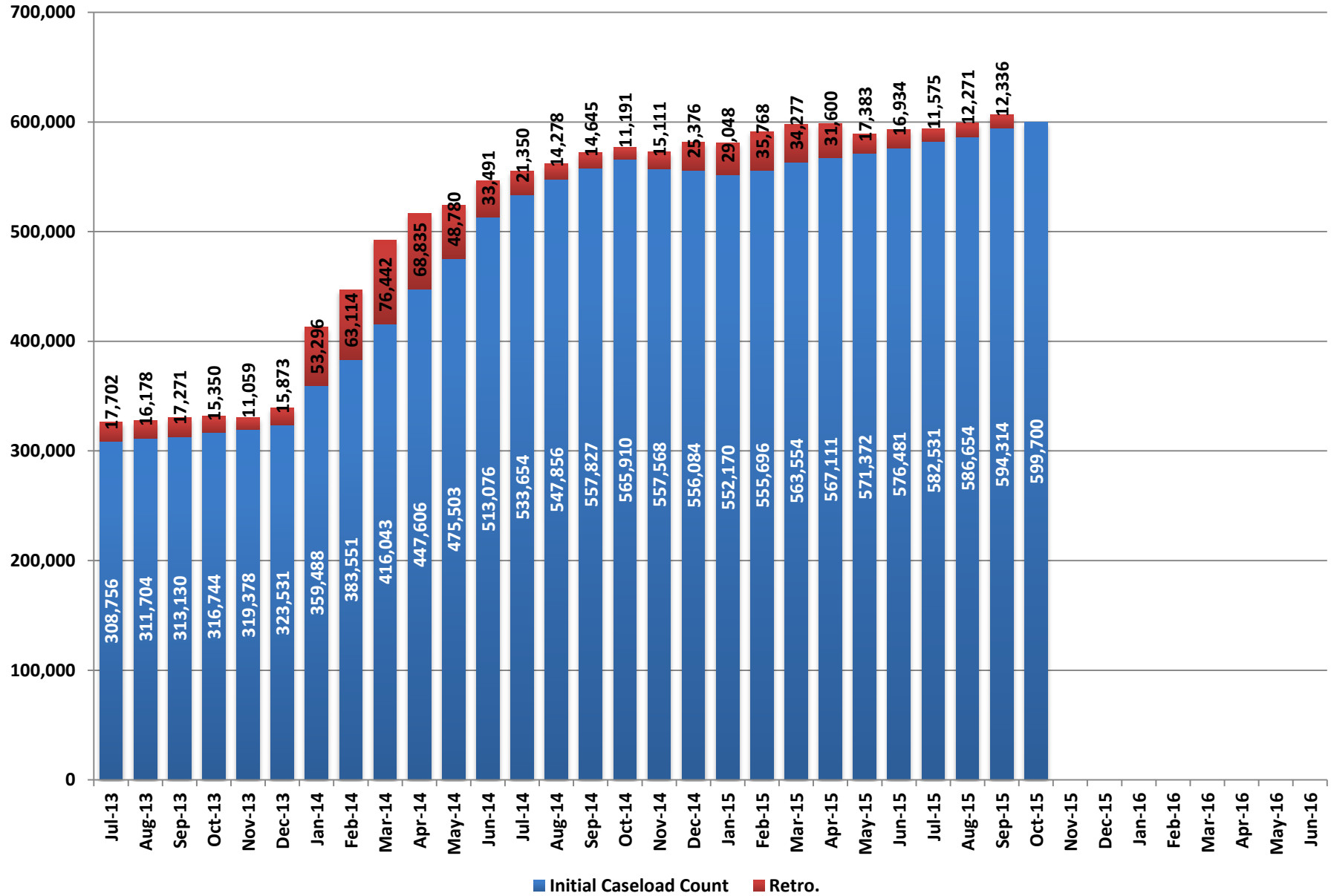
Month	Total Medicaid Recipients	Leg. Approved	October 2015 Projection
Jul-13	308,756	302,133	
Aug-13	311,704	303,108	
Sep-13	313,130	304,125	
Oct-13	316,744	309,289	
Nov-13	319,378	313,966	
Dec-13	323,531	319,296	
Jan-14	359,488	356,572	
Feb-14	383,551	370,719	
Mar-14	416,043	385,155	
Apr-14	447,606	398,982	
May-14	475,503	412,566	
Jun-14	513,076	426,551	
Jul-14	533,654	429,697	
Aug-14	547,856	433,059	
Sep-14	557,827	436,736	
Oct-14	565,910	440,163	
Nov-14	557,568	443,172	
Dec-14	556,084	446,496	
Jan-15	552,170	448,682	
Feb-15	555,696	451,278	
Mar-15	563,554	454,123	
Apr-15	567,111	456,099	
May-15	571,372	458,039	
Jun-15	576,481	460,431	
Jul-15	582,531	577,803	
Aug-15	586,654	579,006	
Sep-15	594,314	579,094	
Oct-15	599,700	583,229	598,942
Nov-15		584,641	598,960
Dec-15		590,343	603,338
Jan-16		587,111	602,824
Feb-16		586,521	604,471
Mar-16		586,771	605,866
Apr-16		581,029	605,970
May-16		576,122	608,153
Jun-16		571,718	608,561

Fiscal Year Average

Fiscal Year	Total Medicaid Recipients	Percent Change
FY10	231,923	
FY11	272,271	17.4%
FY12	289,940	6.5%
FY13	299,548	3.3%
FY14	374,020	24.9%
FY15	558,713	49.4%
FY16 to date	590,800	5.7%



Total Medicaid - Initial and Retroactive Caseload Counts



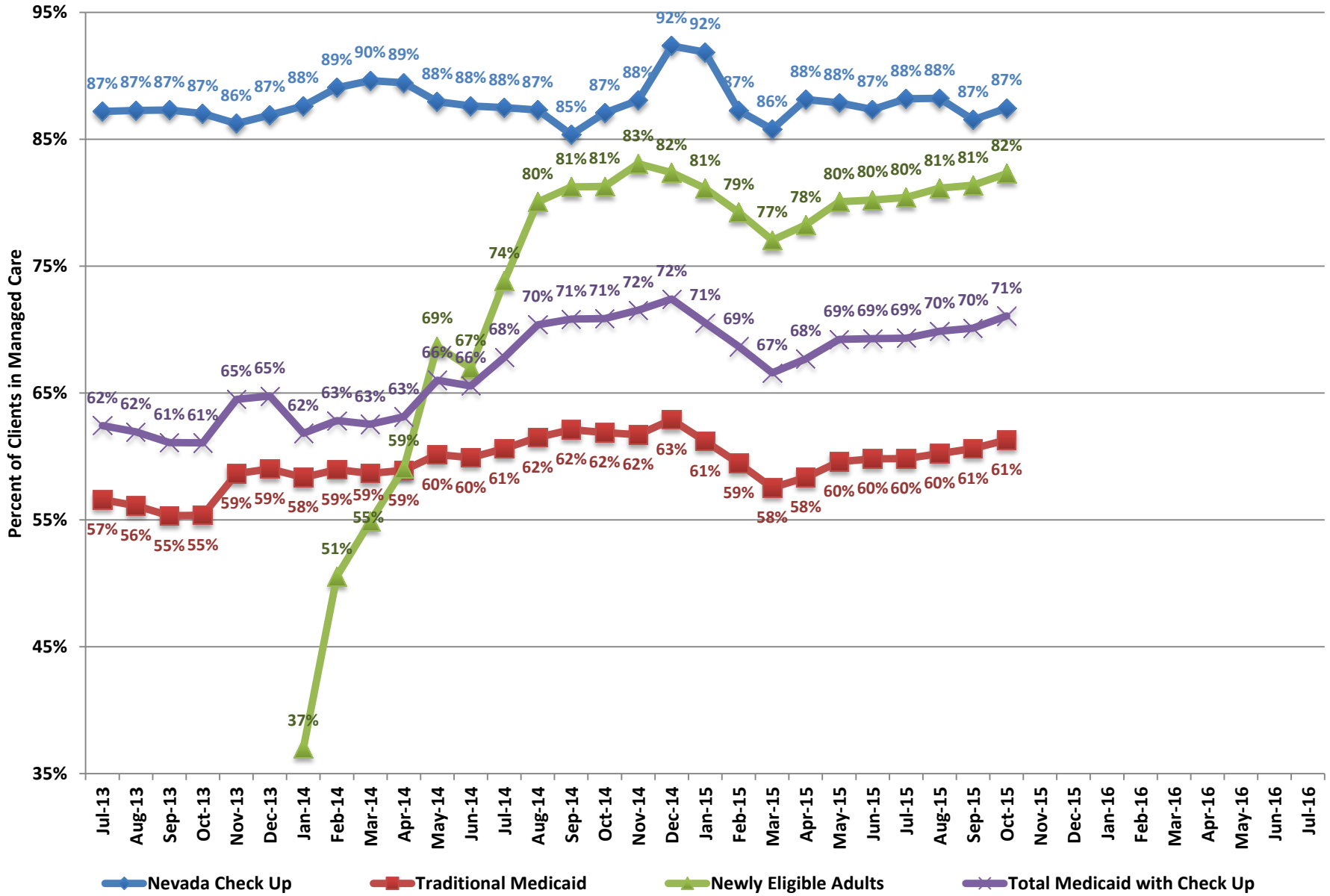
Initial and Retroactive Caseload Counts

	FMC				Aged				Blind and Disabled				Total MAABD				Total Medicaid			
	Initial Caseload Count	Retro.	Caseload with Retro.	% Retro.	Initial Caseload Count	Retro.	Caseload with Retro.	% Retro	Initial Caseload Count	Retro.	Caseload with Retro.	% Retro	Initial Caseload Count	Retro.	Caseload with Retro.	% Retro	Initial Caseload Count	Retro.	Caseload with Retro.	% Retro
Jul-14	442,154	18,878	461,032	4.3%	11,316	330	11,646	2.9%	36,472	805	37,277	2.2%	82,224	2,291	84,515	2.8%	533,654	21,350	555,004	4.0%
Aug-14	455,137	12,221	467,358	2.7%	11,403	294	11,697	2.6%	36,885	589	37,474	1.6%	83,405	1,867	85,272	2.2%	547,856	14,278	562,134	2.6%
Sep-14	464,121	12,872	476,993	2.8%	11,492	273	11,765	2.4%	37,150	564	37,714	1.5%	84,324	1,588	85,912	1.9%	557,827	14,645	572,472	2.6%
Oct-14	471,105	9,698	480,803	2.1%	11,563	223	11,786	1.9%	37,574	439	38,013	1.2%	85,366	1,356	86,722	1.6%	565,910	11,191	577,101	2.0%
Nov-14	462,482	13,891	476,373	3.0%	11,601	165	11,766	1.4%	37,520	374	37,894	1.0%	85,606	1,108	86,714	1.3%	557,568	15,111	572,679	2.7%
Dec-14	461,718	23,647	485,365	5.1%	11,628	198	11,826	1.7%	37,387	519	37,906	1.4%	84,766	1,514	86,280	1.8%	556,084	25,376	581,460	4.6%
Jan-15	457,310	27,412	484,722	6.0%	11,649	212	11,861	1.8%	37,585	519	38,104	1.4%	85,263	1,402	86,665	1.6%	552,170	29,048	581,218	5.3%
Feb-15	460,123	34,220	494,343	7.4%	11,666	176	11,842	1.5%	37,725	517	38,242	1.4%	85,974	1,358	87,332	1.6%	555,696	35,768	591,464	6.4%
Mar-15	467,055	32,623	499,678	7.0%	11,719	201	11,920	1.7%	37,923	545	38,468	1.4%	86,738	1,462	88,200	1.7%	563,554	34,277	597,831	6.1%
Apr-15	469,884	29,765	499,649	6.3%	11,764	235	11,999	2.0%	38,177	574	38,751	1.5%	87,339	1,632	88,971	1.9%	567,111	31,600	598,711	5.6%
May-15	473,464	16,113	489,577	3.4%	11,793	181	11,974	1.5%	38,356	403	38,759	1.1%	87,882	1,087	88,969	1.2%	571,372	17,383	588,755	3.0%
Jun-15	477,532	15,561	493,093	3.3%	11,878	207	12,085	1.7%	38,710	457	39,167	1.2%	88,864	1,181	90,045	1.3%	576,481	16,934	593,415	2.9%
Jul-15	483,253	10,561	493,814	2.2%	11,922	139	12,061	1.2%	38,752	305	39,057	0.8%	89,152	847	89,999	1.0%	582,531	11,575	594,106	2.0%
Aug-15	486,945	11,402	498,347	2.3%	11,981	98	12,079	0.8%	38,940	276	39,216	0.7%	89,453	726	90,179	0.8%	586,654	12,271	598,925	2.1%
Sep-15	494,231	11,584	505,815	2.3%	11,991	89	12,080	0.7%	39,061	284	39,345	0.7%	89,859	660	90,519	0.7%	594,314	12,336	606,650	2.1%
Oct-15	498,924				12,089				39,263				90,453				599,700			
Nov-15																				
Dec-15																				
Jan-16																				
Feb-16																				
Mar-16																				
Apr-16																				
May-16																				
Jun-16																				

Fiscal Year Averages

Fiscal Year	FMC				Aged				Blind and Disabled				Total MAABD				Total Medicaid			
	Initial Caseload Count	Retro.	Caseload with Retro.	% Retro.	Initial Caseload Count	Retro.	Caseload with Retro.	% Retro	Initial Caseload Count	Retro.	Caseload with Retro.	% Retro	Initial Caseload Count	Retro.	Caseload with Retro.	% Retro	Initial Caseload Count	Retro.	Caseload with Retro.	% Retro
FY14	287,197	33,883	321,080	11.1%	10,974	298	11,272	2.7%	34,629	1,376	36,005	4.0%	77,858	2,398	80,257	3.1%	374,043	36,449	410,492	9.3%
FY15	463,507	20,575	484,082	4.4%	11,623	225	11,847	1.9%	37,622	525	38,147	1.4%	85,646	1,487	87,133	1.7%	558,774	22,247	581,021	4.0%
FY16 to date	490,838	11,182	499,325	2.3%	11,996	108	12,073	0.9%	39,004	288	39,206	0.7%	89,729	744	90,232	0.8%	590,800	12,061	599,894	2.1%

Percent in Managed Care by Client Type



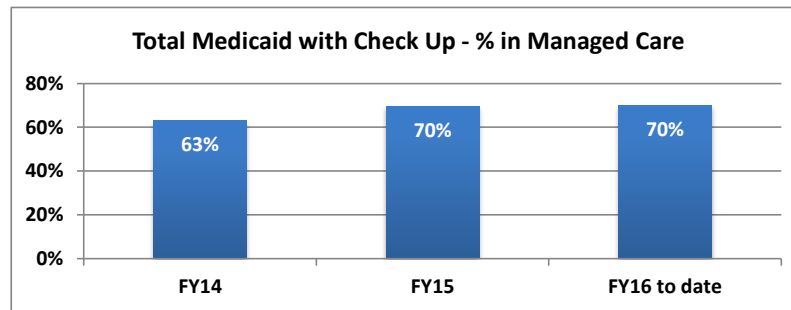
Managed Care Enrollment

Month	Nevada Check Up			Traditional Medicaid			Newly Eligible Adults			Total Medicaid with Check Up		
	Managed Care Enrollment	Total Caseload	% in Managed Care	Managed Care Enrollment	Total Caseload net of SLMB	% in Managed Care	Managed Care Enrollment	Total Caseload	% in Managed Care	Managed Care Enrollment	Total Caseload net of SLMB	% in Managed Care
Jul-14	21,056	24,062	88%	246,697	406,981	61%	102,004	138,162	74%	369,757	545,143	68%
Aug-14	22,749	26,057	87%	255,444	415,316	62%	116,710	145,761	80%	394,903	561,077	70%
Sep-14	20,727	24,276	85%	259,459	417,735	62%	122,941	151,308	81%	403,127	569,043	71%
Oct-14	21,526	24,717	87%	260,195	420,486	62%	127,480	156,835	81%	409,201	577,321	71%
Nov-14	21,662	24,597	88%	252,144	408,586	62%	133,092	160,205	83%	406,898	568,791	72%
Dec-14	21,798	23,603	92%	252,731	401,766	63%	135,852	164,906	82%	410,381	566,672	72%
Jan-15	19,078	20,767	92%	240,793	393,451	61%	134,994	166,393	81%	394,865	559,844	71%
Feb-15	17,980	20,600	87%	233,076	391,981	59%	135,531	171,041	79%	386,587	563,022	69%
Mar-15	17,146	19,985	86%	226,252	393,204	58%	136,242	176,834	77%	379,640	570,038	67%
Apr-15	17,813	20,208	88%	229,849	393,933	58%	140,674	179,759	78%	388,336	573,692	68%
May-15	18,718	21,298	88%	237,126	397,888	60%	144,971	181,051	80%	400,815	578,939	69%
Jun-15	18,420	21,089	87%	240,952	402,798	60%	145,036	180,817	80%	404,408	583,615	69%
Jul-15	18,516	20,995	88%	243,673	407,308	60%	146,559	182,223	80%	408,748	589,531	69%
Aug-15	18,859	21,373	88%	247,172	410,352	60%	149,111	183,742	81%	415,142	594,094	70%
Sep-15	18,307	21,154	87%	251,157	414,269	61%	152,262	187,110	81%	421,726	601,379	70%
Oct-15	19,608	22,419	87%	256,379	418,243	61%	156,076	189,623	82%	432,063	607,866	71%
Nov-15	19,794			256,741			158,049			434,584		
Dec-15												
Jan-16												
Feb-16												
Mar-16												
Apr-16												
May-16												
Jun-16												
Jul-16												

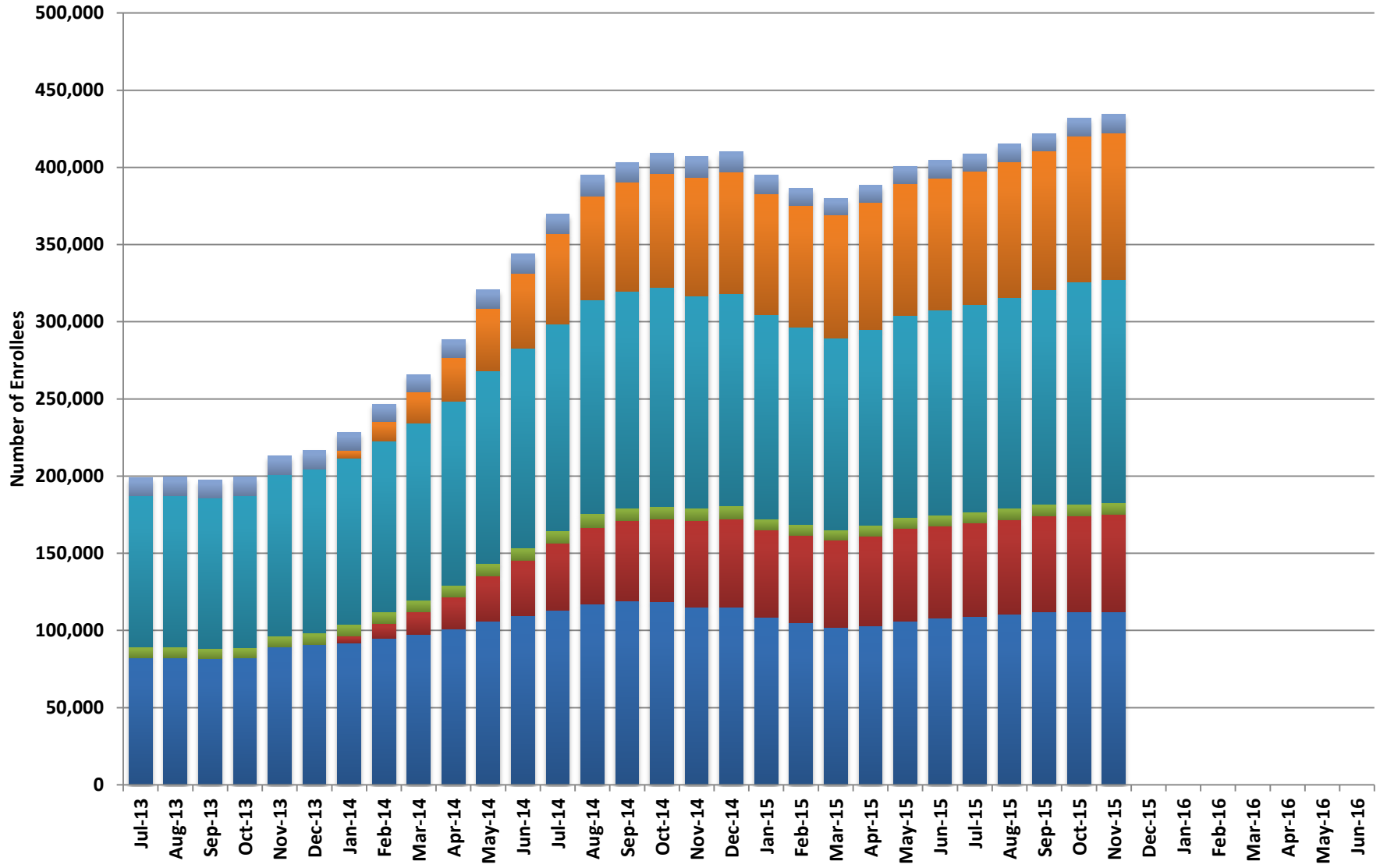
Note: Traditional Medicaid totals include both cat 11 (CHIP Expansion), and cat 12 (TANF/CHAP) populations.

Total Medicaid with Check Up Fiscal Year Averages

	Managed Care Enrollment	% in Managed Care
FY14	243,142	63%
FY15	395,743	70%
FY16 to date	422,453	70%



Managed Care Enrollment by Plan and Client Type



■ Amerigroup Traditional Medicaid
 ■ Amerigroup Newly Eligible Adults
 ■ Amerigroup Nevada Check Up
■ Health Plan of Nevada Traditional Medicaid
 ■ Health Plan of Nevada Newly Eligible Adults
 ■ Health Plan of Nevada Nevada Check Up

Managed Care Enrollment by Plan and Client Type

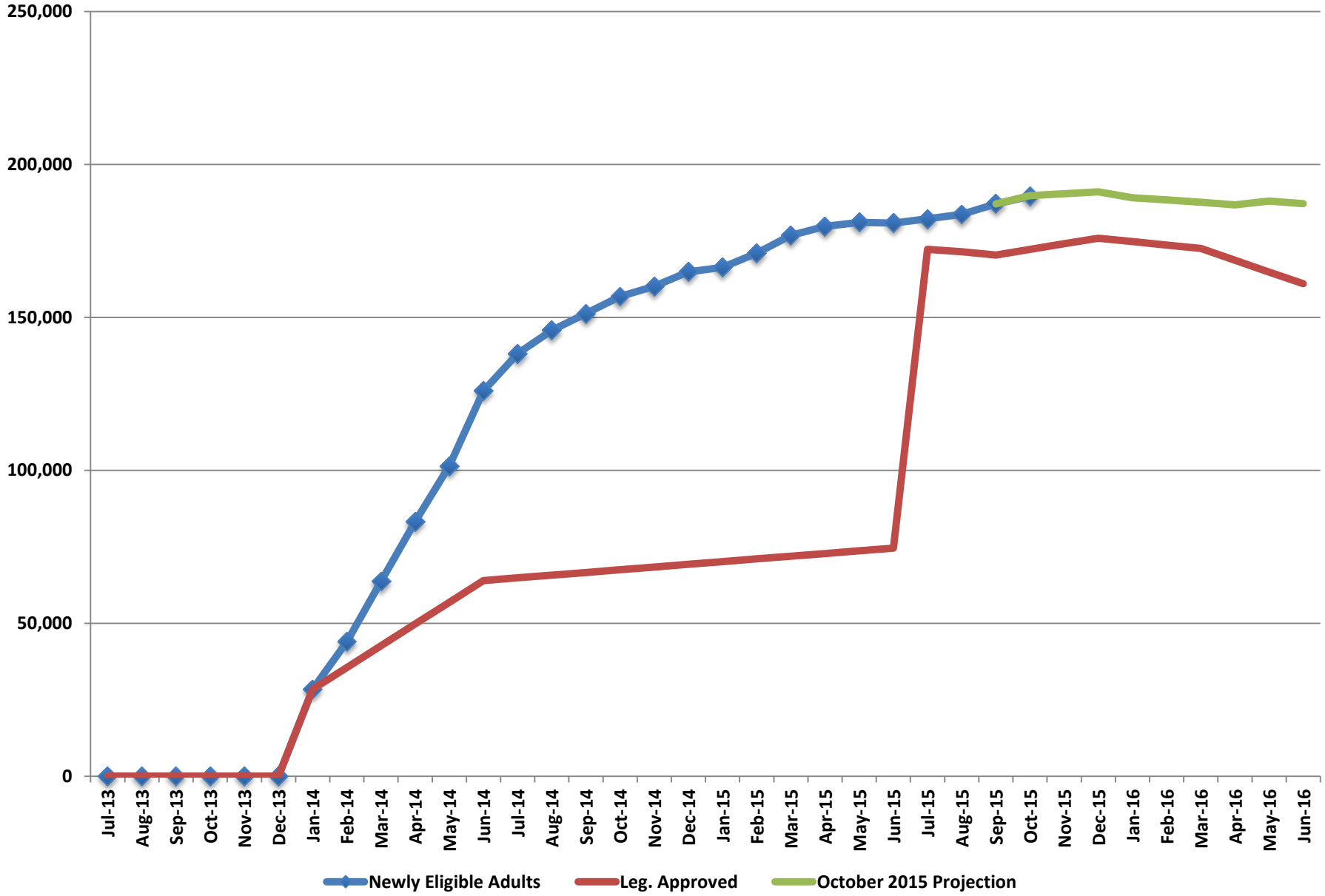
Month	Amerigroup								Health Plan of Nevada								Total Managed Care Enrollment
	Traditional Medicaid	% of Traditional Medicaid	Newly Eligible Adults	% of Newly Eligible	Nevada Check Up	% of Nevada Check Up	Total for Plan	% of Total	Traditional Medicaid	% of Traditional Medicaid	Newly Eligible Adults	% of Newly Eligible	Nevada Check Up	% of Nevada Check Up	Total for Plan	% of Total	
Jul-14	113,152	46%	43,213	42%	8,358	40%	164,723	45%	133,545	54%	58,791	58%	12,698	60%	205,034	55%	369,757
Aug-14	117,126	46%	49,565	42%	9,101	40%	175,792	45%	138,318	54%	67,145	58%	13,648	60%	219,111	55%	394,903
Sep-14	118,938	46%	52,175	42%	8,205	40%	179,318	44%	140,521	54%	70,766	58%	12,522	60%	223,809	56%	403,127
Oct-14	118,400	46%	53,694	42%	8,229	38%	180,323	44%	141,795	54%	73,786	58%	13,297	62%	228,878	56%	409,201
Nov-14	114,862	46%	56,132	42%	8,357	39%	179,351	44%	137,282	54%	76,960	58%	13,305	61%	227,547	56%	406,898
Dec-14	115,024	46%	57,181	42%	8,514	39%	180,719	44%	137,707	54%	78,671	58%	13,284	61%	229,662	56%	410,381
Jan-15	108,592	45%	56,467	42%	7,310	38%	172,369	44%	132,201	55%	78,527	58%	11,768	62%	222,496	56%	394,865
Feb-15	105,039	45%	56,648	42%	6,902	38%	168,589	44%	128,037	55%	78,883	58%	11,078	62%	217,998	56%	386,587
Mar-15	101,853	45%	56,757	42%	6,601	38%	165,211	44%	124,399	55%	79,485	58%	10,545	62%	214,429	56%	379,640
Apr-15	102,822	45%	58,261	41%	6,834	38%	167,917	43%	127,027	55%	82,413	59%	10,979	62%	220,419	57%	388,336
May-15	106,202	45%	59,826	41%	7,284	39%	173,312	43%	130,924	55%	85,145	59%	11,434	61%	227,503	57%	400,815
Jun-15	107,816	45%	59,627	41%	7,231	39%	174,674	43%	133,136	55%	85,409	59%	11,189	61%	229,734	57%	404,408
Jul-15	109,200	45%	60,248	41%	7,292	39%	176,740	43%	134,473	55%	86,311	59%	11,224	61%	232,008	57%	408,748
Aug-15	110,797	45%	61,059	41%	7,481	40%	179,337	43%	136,375	55%	88,052	59%	11,378	60%	235,805	57%	415,142
Sep-15	112,302	45%	62,091	41%	7,318	40%	181,711	43%	138,855	55%	90,171	59%	10,989	60%	240,015	57%	421,726
Oct-15	112,209	44%	61,916	40%	7,616	39%	181,741	42%	144,170	56%	94,160	60%	11,992	61%	250,322	58%	432,063
Nov-15	112,245	44%	62,760	40%	7,664	39%	182,669	42%	144,496	56%	95,289	60%	12,130	61%	251,915	58%	434,584
Dec-15																	
Jan-16																	
Feb-16																	
Mar-16																	
Apr-16																	
May-16																	
Jun-16																	

Note: Traditional Medicaid totals include both cat 11 (CHIP Expansion), and cat 12 (TANF/CHAP) populations.

Fiscal Year Averages

Fiscal Year	Amerigroup								Health Plan of Nevada							
	Traditional Medicaid	% of Traditional Medicaid	Newly Eligible Adults	% of Newly Eligible	Nevada Check Up	% of Nevada Check Up	Total for Plan	% of Total	Traditional Medicaid	% of Traditional Medicaid	Newly Eligible Adults	% of Newly Eligible	Nevada Check Up	% of Nevada Check Up	Total for Plan	% of Total
FY14	92,468	46%	19,115	43%	7,348	38%	109,373	45%	109,038	54%	25,929	57%	11,760	62%	133,762	55%
FY15	110,819	45%	54,962	42%	7,744	39%	173,525	44%	133,741	55%	76,332	58%	12,146	61%	222,218	56%
FY16 to date	111,351	44%	61,615	40%	7,474	39%	180,440	43%	139,674	56%	90,797	60%	11,543	61%	242,013	57%

Newly Eligible Adults

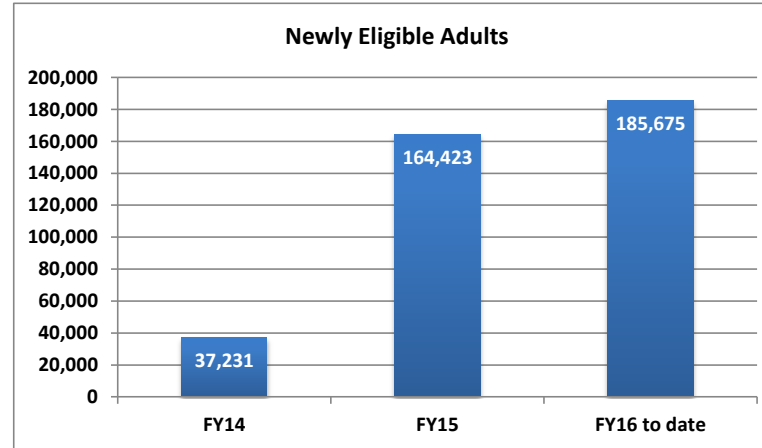


Newly Eligible Adults (100% FMAP)

Month	Newly Eligible Adults	Leg. Approved	October 2015 Projection
Jul-13		0	
Aug-13		0	
Sep-13		0	
Oct-13		0	
Nov-13		0	
Dec-13		0	
Jan-14	28,435	28,429	
Feb-14	44,012	35,536	
Mar-14	63,731	42,643	
Apr-14	83,216	49,750	
May-14	101,384	56,858	
Jun-14	125,989	63,965	
Jul-14	138,162	64,849	
Aug-14	145,761	65,733	
Sep-14	151,308	66,617	
Oct-14	156,835	67,501	
Nov-14	160,205	68,386	
Dec-14	164,906	69,270	
Jan-15	166,393	70,154	
Feb-15	171,041	71,038	
Mar-15	176,834	71,922	
Apr-15	179,759	72,806	
May-15	181,051	73,690	
Jun-15	180,817	74,574	
Jul-15	182,223	172,250	
Aug-15	183,742	171,482	
Sep-15	187,110	170,437	
Oct-15	189,623	172,267	189,842
Nov-15		174,080	190,414
Dec-15		175,874	191,076
Jan-16		174,775	189,124
Feb-16		173,677	188,462
Mar-16		172,578	187,673
Apr-16		168,711	186,841
May-16		164,862	188,041
Jun-16		161,032	187,175

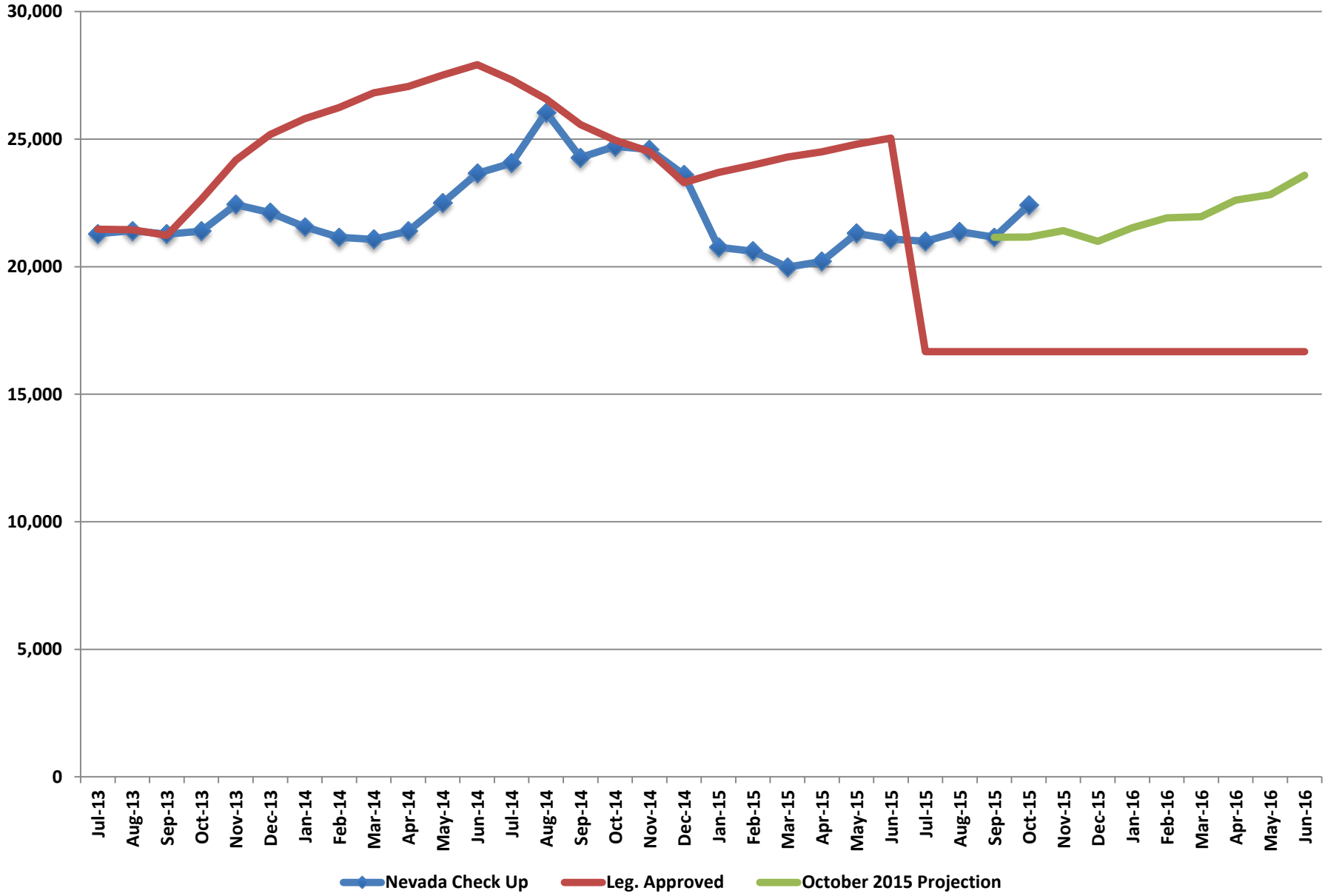
Fiscal Year Average

Fiscal Year	Newly Eligible Adults	Percent Change
FY14	37,231	
FY15	164,423	341.6%
FY16 to date	185,675	12.9%



Note: This caseload includes childless adults age 19-64 between 0%-138% FPL and parents age 19-64 between 23%-138% FPL.

Nevada Check Up

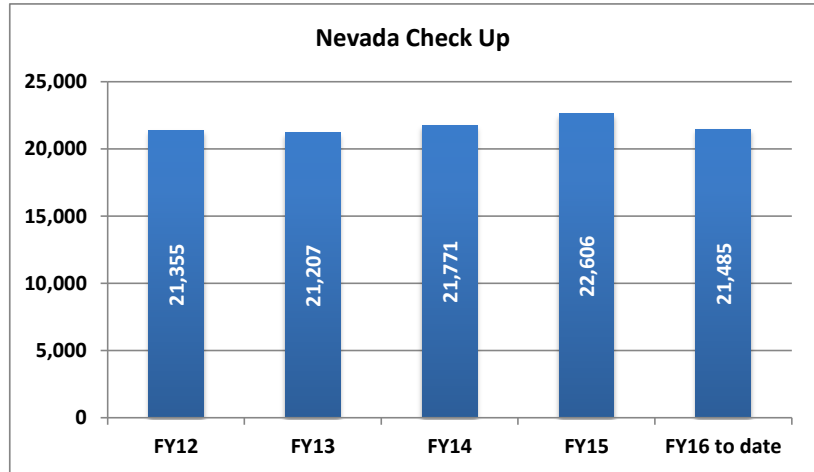


Nevada Check Up

Month	Nevada Check Up	Leg. Approved	October 2015 Projection
Jul-13	21,287	21,470	
Aug-13	21,415	21,447	
Sep-13	21,275	21,225	
Oct-13	21,392	22,636	
Nov-13	22,430	24,181	
Dec-13	22,116	25,181	
Jan-14	21,561	25,807	
Feb-14	21,152	26,240	
Mar-14	21,072	26,810	
Apr-14	21,398	27,065	
May-14	22,495	27,513	
Jun-14	23,655	27,921	
Jul-14	24,062	27,320	
Aug-14	26,057	26,575	
Sep-14	24,276	25,566	
Oct-14	24,717	24,960	
Nov-14	24,597	24,511	
Dec-14	23,603	23,297	
Jan-15	20,767	23,694	
Feb-15	20,600	23,988	
Mar-15	19,985	24,302	
Apr-15	20,208	24,506	
May-15	21,298	24,799	
Jun-15	21,089	25,039	
Jul-15	20,995	16,672	
Aug-15	21,373	16,672	
Sep-15	21,154	16,672	
Oct-15	22,419	16,672	21,165
Nov-15		16,672	21,416
Dec-15		16,672	20,991
Jan-16		16,672	21,522
Feb-16		16,672	21,909
Mar-16		16,672	21,961
Apr-16		16,672	22,608
May-16		16,672	22,824
Jun-16		16,672	23,583

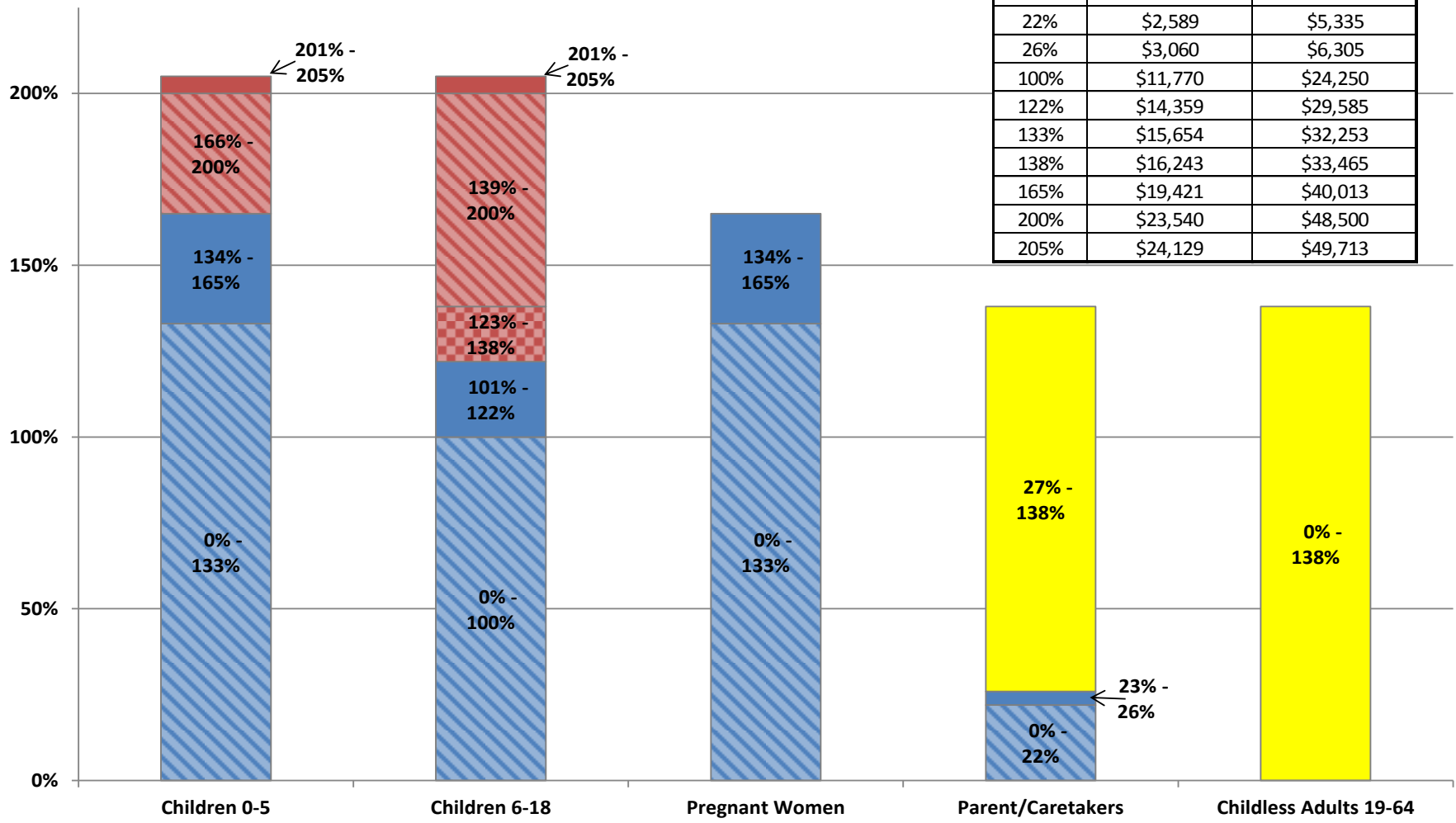
Fiscal Year Average

Fiscal Year	Nevada Check Up	Percent Change
FY12	21,355	
FY13	21,207	-0.7%
FY14	21,771	2.7%
FY15	22,606	3.8%
FY16 to date	21,485	-5.0%



Medicaid Eligibility and FMAP

2015 Federal Poverty Guidelines		
FPL	Household Size 1	Household Size 4
22%	\$2,589	\$5,335
26%	\$3,060	\$6,305
100%	\$11,770	\$24,250
122%	\$14,359	\$29,585
133%	\$15,654	\$32,253
138%	\$16,243	\$33,465
165%	\$19,421	\$40,013
200%	\$23,540	\$48,500
205%	\$24,129	\$49,713



- Old Eligibility Standard, Regular FMAP
- New Eligibility Standard, Regular FMAP
- New Eligibility Standard, Medicaid Clients with CHIP FMAP
- Old Eligibility Standard, CHIP FMAP
- New Eligibility Standard, CHIP FMAP
- New Eligibility Standard, 100% FMAP

Blended Federal Medical Assistance Percentage (FMAP)

Update September 2015

State Fiscal Year	FMAP	Enhanced (CHIP) FMAP	ACA Enhanced (CHIP) FMAP	New Eligibles FMAP
FY03	51.79%	66.25%		
	52.53%	66.77%		
FY04	54.30%	68.01%		
	55.34%	68.74%		
FY05	55.66%	68.96%		
FY06	55.05%	68.53%		
FY07	54.14%	67.90%		
FY08	52.96%	67.07%		
FY09	50.66%	65.46%		
	61.11%	72.78%		
FY10	50.12%	65.08%		
	63.93%	74.75%		
FY11	51.25%	65.87%		
	62.05%	70.44%		
FY12	55.05%	68.54%		
FY13	58.86%	71.20%		
FY14	62.26%	73.58%		100.00%
FY15	64.04%	74.83%		100.00%
FY16	64.79%	75.35%	92.60%	100.00%
FY17	64.74%	75.32%	98.32%	97.50%
FY18	64.87%	75.41%	98.41%	94.50%
FY19	64.63%	75.24%	98.24%	93.50%
FY20	64.15%	74.90%	80.65%	91.50%

NOTE: The green cells reflect a 2.95% increase for the period April 2003 through June 2004. The blue cells reflect the ARRA stimulus adjusted FMAP for October 2008 through December 2010. The FMAP values for FY18 through FY20 are projections.